



EKLIPSE

Knowledge & Learning Mechanism
on Biodiversity & Ecosystem Services

Developing a mechanism
for supporting better
decisions on our
environment
based on the best
available knowledge.

EKLIPSE is setting up a self-sustaining European Mechanism able to answer requests from policy makers and other societal actors on biodiversity related issues.

EKLIPSE organizes and facilitates knowledge synthesis processes, horizon scanning and societal dialogue on topics that relate to or impact on biodiversity and ecosystem services by making the best knowledge available.

EKLIPSE mechanism will be managed by the ALTER-Net Network from August 2020 onwards

More information on the processes and the EKLIPSE mechanism

at www.eclipse-mechanism.eu or www.alter-net.info

Third CALL for Nominations for Members of Knowledge Coordination Body – CfKCB.3/2020

Deadline for Call: March 13th 2020

Announcement of the KCB: Week starting 30th March, 2020

Period in office: April 2020 – March 2022 (re-election possible)

1 Invitation to become a member of the Knowledge Coordination Body (KCB)

EKLIPSE is **inviting applications to join the Knowledge Coordination Body (KCB) until March 2022**. The KCB organises and accompanies the knowledge synthesis processes within EKLIPSE. The KCB also coordinates other tasks required to set up a self-sustaining mechanism for evidence-based and evidence-informed policy on biodiversity and ecosystem services.

Do you have expertise and interest in enhancing the Science Policy Interface?

Would you like to contribute to policy-relevant processes?

Do you want to contribute to the selection of policy relevant request to be addressed?

Are you interested in collaborating in a trans-disciplinary and multi-cultural setting?

Then please express your interest in participating at http://www.eclipse-mechanism.eu/open_calls where you will find a link to the online application form.



Horizon 2020
European Union Funding
For Research & Innovation
Grant agreement 690474

2 EKLIPSE and its added values

EKLIPSE coordinates innovative and transparent approaches for science, policy and societal actors to jointly provide the best available evidence leading to better informed decision-making. The topic and/or evidence needs are identified by policy and other societal actors. All EKLIPSE's past and current requests and their outputs can be found on the [EKLIPSE website](#).

The added values of the EKLIPSE approach are multifold (See Figure 1 and 2, see also the [video on added values](#) on the EKLIPSE website):

1. The EKLIPSE approach responds directly to policy and other societal actors' knowledge needs through regular Calls for Requests
2. The EKLIPSE approach frames questions directly with requesters to better understand what knowledge they need, for what purposes, in what timescale and with which resources
3. The EKLIPSE approach builds on existing knowledge and links requests for knowledge to the most relevant knowledge holders
4. EKLIPSE includes a Methods Expert Group, who have identified 21 knowledge synthesis methods, and suggest the most relevant methods to match requesters' needs
5. EKLIPSE approach is building its activities on a strong Ethical Infrastructure and a strong focus on networking and institutional support

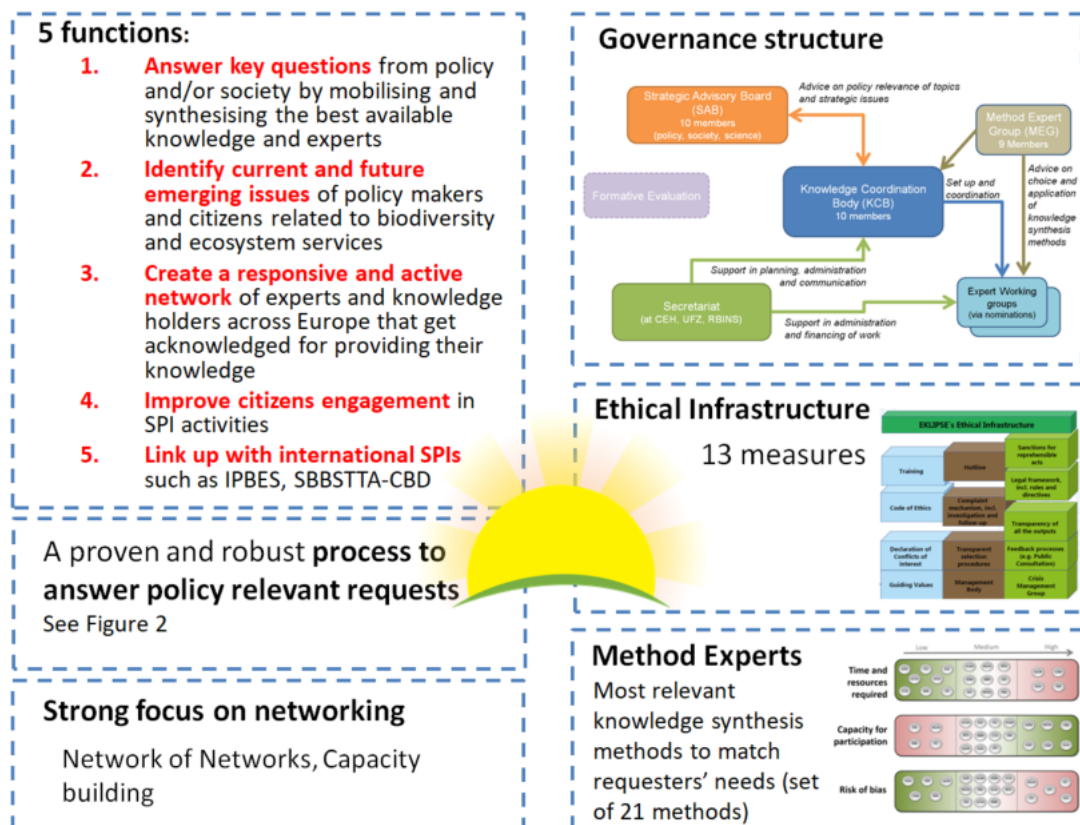


Figure 1: The combination of components making EKLIPSE unique





Figure 2: The EKLIPSE process of answering a request

3 Roles and tasks of the KCB (Please refer to the [KCB Guidance Note](#))

3.1 Role of the KCB

The Knowledge Coordination Body (KCB) is responsible for managing the answering of requests by coordinating joint evidence processes. The KCB is also coordinating the identification of research priorities and emerging issues, the Network of Networks, and encouraging societal engagement.

3.2 Main tasks of the KCB

- Contribute to selecting and scoping requests from policy and other societal actors;
- The KCB Chair, together with the EKLIPSE Management Body, appoints a ‘KCB focal point’ and a deputy for each request. The focal points and deputies oversee all joint evidence processes in close collaboration with the EKLIPSE Management Body, thereby ensuring continuity throughout the request. They select the experts to form Expert Working Groups, and ensure that the experts comply with the procedures and the rights/rules/ethics and quality controls of EKLIPSE.
- The KCB also coordinates requests and processes concerning the identification of research priorities and emerging issues, the Network of Networks, and encouraging societal engagement.

For a full list of tasks and a more detailed description related to KCB role, please refer to three EKLIPSE guidance notes: [Understanding the KCB](#); [Scoping with the Requester](#); [Preparing and managing calls for experts](#).



4 What to expect and what is it in it for you?

- The KCB members are expected to dedicate about 10-15% of their time over the period in post. Please note that the KCB work is very irregular. At some times, nearly no work will be required and at others, up to 30% of your time may be required. As such, it is useful to explicitly consider how your engagement in EKLIPSE will benefit your current work and vice versa.
- The KCB members are expected to work in close collaboration with the EKLIPSE Management Body.
- The KCB members are expected to comply with EKLIPSE guidance notes and ethical infrastructure.
- You should consider applying to the Call for KCB if:
 - o You are motivated to make a difference by contributing to strengthen the knowledge evidence in the area of biodiversity and ecosystem services and by building bridges between science, policy and society through knowledge synthesis, identifying research priorities, and contributing to building the Network of Networks.
 - o You find it important to translate research results into useful inputs for policy and to co-develop a policy question so that it is understandable for researchers.
 - o You are increasingly frustrated by the dissonance between the amount of existing relevant knowledge and decision/action at a policy scale and you see an opportunity through your involvement in the KCB to both strengthen efforts in providing knowledge synthesis to support policy and decision making and to understand more about the needs of decision makers.
 - o You critically analyse and reflect on science-policy interface (SPI) processes and would also like to contribute to these processes.
 - o You already contribute to SPI processes and would like a European perspective.
 - o You would like to collaborate with an international team.

5 Support provided by EKLIPSE mechanism

EKLIPSE team (see Figure 3): The KCB will be supported by the EKLIPSE Management Body^a in all tasks. The EKLIPSE Management Body will be responsible for direct communication with experts, managing the extended peer-review process, organising meetings, compiling requests and nominations for expertise. The KCB will also be supported by the EKLIPSE Strategic Advisory Body (SAB) regarding important decisions, such as the selection of requests to be processed by EKLIPSE, although the KCB takes the final decisions.

ALTER-Net team: ALTER-Net will be managing the EKLIPSE mechanism from August 2020 onwards.

Financial support: EKLIPSE activities rely on in-kind contributions as in similar science-policy processes. The benefits for experts and institutions arise from networking and the visibility of their expertise to policy and society, particularly through reports and other products. EKLIPSE will actively support the visibility of experts and their institutions, and promote their contributions. In addition:

- All meetings will be organised by EKLIPSE and travel costs will be covered as needed

^a At the time of the call, the EKLIPSE Management Body, including the Secretariat is jointly managed by the UK Centre for Ecology and Hydrology, the Helmholtz-Centre for Environmental Research – UFZ, and the Royal Belgian Institute of Natural Sciences. From August 2020, ALTER-Net will take over the management of the EKLIPSE Management Body.



- Upon request, individual experts from Eastern and Southern European countries might be supported via an honorary contract.

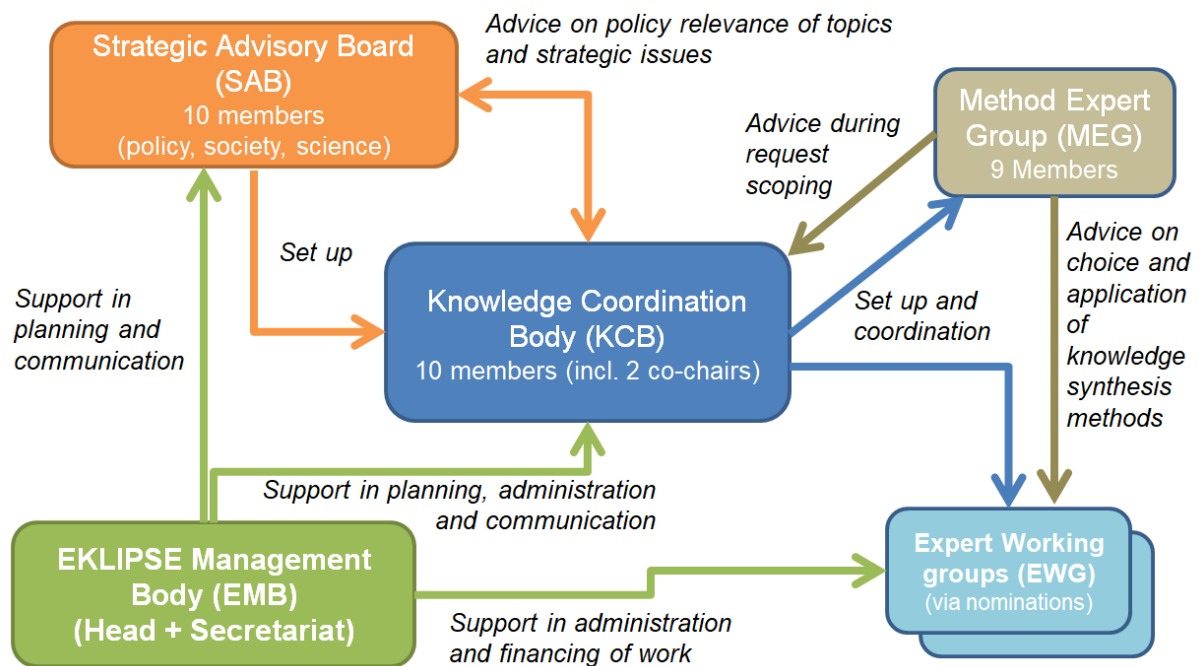


Figure 3: Governance structure of EKLIPSE: This figure highlights the key role of the KCB within the EKLIPSE Mechanism as well as the main interactions of the KCB with the other EKLIPSE bodies, i.e. Strategic Advisory Body (SAB), the EKLIPSE Management Body, the Method Expert Group (MEG) and the Expert Working Groups (EWG).

6 Eligibility and applicant information

6.1 Selection process and criteria for the composition of the KCB

The EKLIPSE Management Body will put in place a selection committee. For this third call for KCB, this selection committee will be composed of members of the current KCB, ALTER-Net Management Board and the EKLIPSE project management group jointly with the Strategic Advisory Board to ensure that the KCB represents the full disciplinary spectrum required, different geographical regions of the EU, and gender balance. The KCB will cover diverse and complementary skills and will interact with relevant stakeholders to ensure better methodological choices and maximal uptake of outputs. To ensure continuity, current or past KCB members are also encouraged to apply to this call. The KCB should form a team of approximately 10 people.

6.2 Selection criteria for the KCB

- Motivation to play a part in the EKLIPSE mechanism and contribute to make it self-sustaining.
- Demonstrated expertise covering one or more of the following: coordinating knowledge synthesis processes, engagement in international science-policy processes; leading foresight initiatives; network coordination; business plan development; managing societal engagement in science; expert mobilisation and selection processes; ethics and management of conflict of interests; knowledge exchange.



- Experience with biodiversity and ecosystem services and/or sustainable development, ideally at the European level.
- Experience at the Science Policy Interface or overview of a policy area relevant to biodiversity such as environmental, agricultural, marine, regional development, infrastructure planning, or sustainable consumption policies.
- Experts will have to comply with the principles and rules of EKLIPSE (e.g. conflicts of interest policy (see http://www.eclipse-mechanism.eu/our_ethical_framework for more detail).
- We encourage applicants to discuss with their institutions and/or with ALTER-Net or other networks to endorse their application. This can help to ensure mutual benefit.

6.3 Data and information policy

All results will be made publicly available through the EKLIPSE website and transparent procedures will apply, following Creative Commons Agreement 4.0 (see above), which includes the reference of authorship and involvement.

7 Application and notification of results

7.1 How to apply

Before applying, you are strongly encouraged to read all relevant EKLIPSE guidance notes, to help you understand better the work and vision of EKLIPSE and the roles of the different bodies.

The EKLIPSE forms for KCB members can be found on the EKLIPSE website under 'Open calls'. The completed form should be submitted by midnight on **March 13th 2020**.

Interested parties are strongly encouraged to ask their organisation / community to provide them with a **letter of support**, which they will be able to upload directly in the application form or send to EKLIPSE Management Body (previously called Secretariat) at Secretariat@EKLIPSE-mechanism.eu. EKLIPSE sees many added values with asking for this letter of support, i.e. for the selection process of course, but mainly as well to start a dialogue between the interested parties and their organisation /community (and eventually EKLIPSE) around the practical question for them to be a member of the KCB and may help the interested party to get recognition within their organisation / community for their work for EKLIPSE.

Should you require any further information do not hesitate to contact us Secretariat@EKLIPSE-mechanism.eu

7.2 Announcement of results

The selection will be made by EKLIPSE Strategic Advisory Body, and shortlisted candidates will be interviewed remotely in the last week of March. Successful applicants will be notified directly by the EKLIPSE Secretariat week starting March 30th 2020. As soon as they accept the nomination, names of selected experts will be made public on the EKLIPSE website. The kick-off meeting of the new KCB will take place in the second half of April.

EKLIPSE has received funding from the European Union's Horizon 2020 program under grant agreement 690474.

