



# EKLIPSE

Knowledge & Learning Mechanism  
on Biodiversity & Ecosystem Services

Developing a mechanism  
for supporting better  
decisions on our  
environment  
based on the best  
available knowledge.

***EKLIPSE is setting up a self-sustaining European Mechanism able to answer requests from policy makers and other societal actors on biodiversity-related issues.***

***EKLIPSE invites proposals for requests from consortia representing policy, research, NGOs or individual applications from policy or other societal actors.***

***EKLIPSE mechanism will be managed by the ALTER-Net Network from August 2020 onwards.***

More information on the processes and the EKLIPSE mechanism at

[www.eclipse-mechanism.eu](http://www.eclipse-mechanism.eu)

**CALL FOR REQUEST Cfr.5/2020, EKLIPSE & ALTER-Net– February 2020**

**Deadline to answer the Call: March 9<sup>th</sup> 2020, 6 pm CET**

**Announcement of the selected request: Week starting 23<sup>rd</sup> March 2020**

## 1 Context

Since its inception in 2016, the EKLIPSE project has set up a knowledge synthesis and sharing mechanism with a focus on science-policy interface and societal engagement. EKLIPSE has now processed 13 requests on a range of topics linked to biodiversity and ecosystem services, from policy and societal actors such as the European Commission, IUCN, the French Ministry from the Environment, Buglife and many more. EKLIPSE uses a proven and robust process that responds to the evidence needs of requesters by producing a broad range of outputs synthesizing the best available knowledge to facilitate actionable policy recommendations. The mechanism will be managed by the ALTER-Net Network ([www.alter-net.info](http://www.alter-net.info)) from August 2020 onwards. This call is the first Joint EKLIPSE – ALTER-Net call. As EKLIPSE remains a European Union funded project until July 2020, the selected requesters will not pay the full cost for their request to be processed (see more details in the call).



Horizon 2020  
European Union Funding  
For Research & Innovation  
Grant agreement 690474

## 2 Invitation to request knowledge for informed decision-making

Policy and other societal actors are invited to **identify topics or evidence needs relating to biodiversity and ecosystem services and of EU policy relevance, requiring in-depth analysis and a consolidated view from science and other knowledge holders**. We particularly encourage requests from consortia representing policy, research, NGOs and also welcome individual applications.

Interested parties – including consortia – should apply by **March 9<sup>th</sup> 2020** by following the rules and procedures detailed below. The selected requests will be announced week starting **March 23<sup>rd</sup> 2020** and will be publicized on the EKLIPSE website. The process of answering these requests will start thereafter.

*Please put forward your request by accessing the open calls on [www.eclipse-mechanism.eu/open\\_calls](http://www.eclipse-mechanism.eu/open_calls)*

## 3 Objective of the call

EKLIPSE coordinates innovative and transparent approaches for science, policy and societal actors to jointly provide the best available evidence leading to better informed decision-making. The topic and/or evidence needs are identified by policy and other societal actors. All EKLIPSE's past and current requests and their outputs can be found on the EKLIPSE website.

The process of knowledge synthesis is a crucial element of any science policy interface. Knowledge synthesis' refers to a set of methods used to review, collate and communicate the best available knowledge on a specific topic or question, including explicit scientific knowledge, but also indigenous and local knowledge, or tacit technical or opinion based knowledge held by stakeholders (Dick et al., 2017). EKLIPSE's Method Expert Group (MEG) has identified and described 21 different methods to synthesize the different types of knowledge needs requested (see EKLIPSE's MEG report for further information). On this basis, EKLIPSE identifies and tailors a set of methods for each specific request from policy makers and societal actors.

The objective of this call is to encourage policy and other societal actors to suggest topics and/or evidence needs to be addressed by EKLIPSE, within the scope of its functions (see below).

Potential requests include:

- **Greater understanding or predictive power** e.g. what is the role of biodiversity in maintaining specific ecosystem functions e.g. biogeochemical cycles?
- **Measures of anthropogenic impact** e.g. what is the impact of wind farms on bird populations?
- **Measures of effectiveness of interventions** e.g. how effective are marine protected areas at enhancing commercial fish populations?
- **Appropriate methodologies** e.g. what is the most reliable method for monitoring changes in carbon stocks in forest ecosystems?
- **Optimal management options** e.g. what is the optimal grazing regime for maximizing plant diversity in upland meadows?
- **Socio-economic impacts of specific developments in biodiversity** e.g. what are the anticipated costs of the spread of the invasive species xyz on health or agriculture?
- **Desirable states** e.g. what is the desirable state of forest in terms of deadwood and other biodiversity-relevant structures?



- **Scenario building** e.g. how will the risk of flooding change under current climate scenarios up to 2050?
- **Existing knowledge of distribution of species, diseases and their drivers** e.g. how has the distribution and abundance of rabies in fox populations changed in the last 10 years?
- **Clarification of definitions** e.g. how do different people/groups define ecosystem services?
- **Consultation to identify research priorities** (e.g. What are current knowledge gaps and needs on nanoparticles impact on marine biodiversity)
- **Horizon scanning** e.g. what will be the biggest novel threats to biodiversity in 2050?
- **Public opinion/ perception issues** e.g. is there public support for badger culling in the UK?

## 4 Added values of EKLIPSE

The added values of the EKLIPSE approach are multifold (See Figure 1 and 2, see also the [video on added values](#) on the EKLIPSE website):

1. The EKLIPSE approach responds directly to policy and other societal actors' knowledge needs through regular Calls for Requests
2. The EKLIPSE approach frames questions directly with requesters to better understand what knowledge they need, for what purposes, in what timescale and with which resources
3. The EKLIPSE approach builds on existing knowledge and links requests for knowledge to the most relevant knowledge holders
4. EKLIPSE includes a Methods Expert Group, who have identified 21 knowledge synthesis methods, and suggest the most relevant methods to match requesters' needs
5. EKLIPSE approach is building its activities on a strong Ethical Infrastructure and a strong focus on networking and institutional support

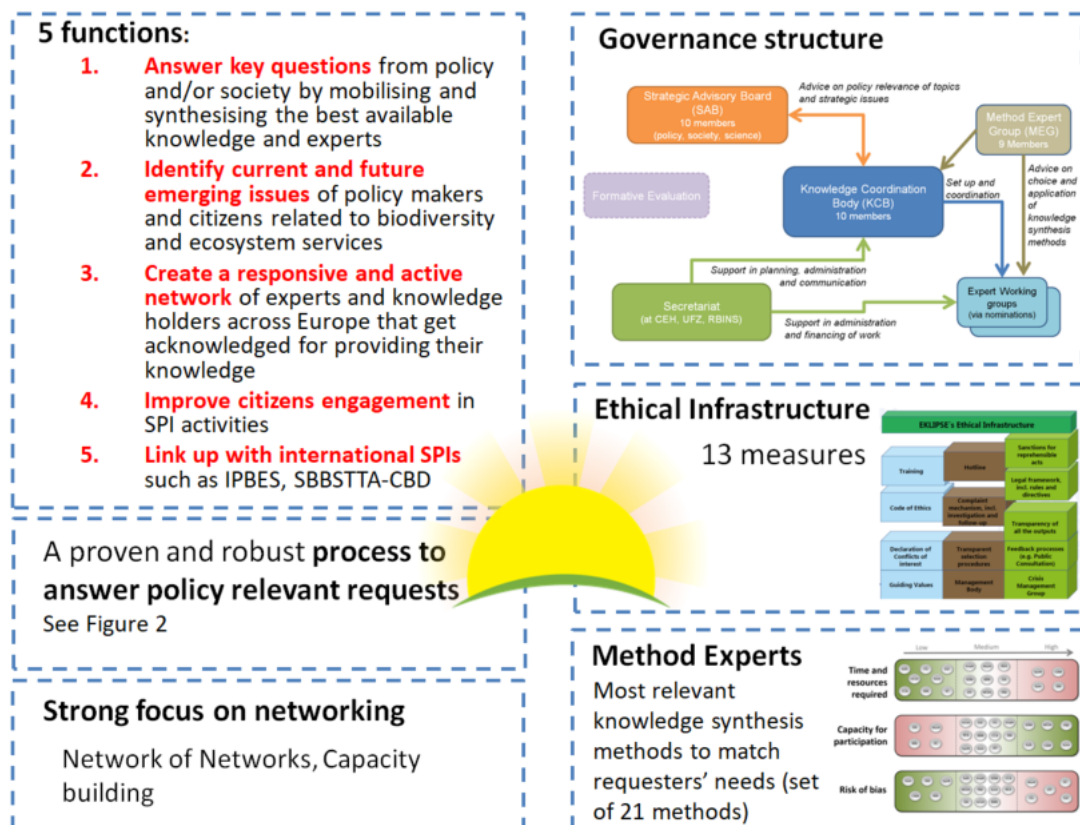


Figure 1: The combination of components making EKLIPSE unique



## 5 Process for the call for requests

Interested parties or consortia (referred to as the requester) need to fill in a [request form](#) on the EKLIPSE website outlining the major elements of the request by 6pm (CET) on **March 9<sup>th</sup> 2020**. In this form, the requester is expected to provide some background on why the topic/evidence need is of interest, its policy relevance at the European scale, an indication of required outputs, deadline for final outputs, budget available, how the requester plans to use this information, etc. To further expand the selection process, the request form will be screened by the EKLIPSE Secretariat who might engage in an initial exchange with the requester to clarify general questions. In addition, requesters will be encouraged to allow the Secretariat to share their request via the EKLIPSE KNOCK Forum to allow other forum participants to discuss topics put forward in the request form, find common ground and potentially create consortia.

The submitted requests will then be proposed to and discussed with the Strategic Advisory Board and selected by the Knowledge Coordination Body of EKLIPSE. The outcome of the selection process will be announced week starting 23<sup>rd</sup> March 2020. This stepwise selection increases the quality and relevance of the request. It is in the interest of the requester to prepare their request as thoroughly and precisely as possible in order to facilitate the selection process.

All selected requests will go through an initial scoping phase (funded by the EKLIPSE project) and, potentially, a preliminary call for knowledge and stakeholder consultation to support the framing of the request. Depending on the type of request, a dedicated expert working group could be set to, together with the requester and a representative of the Methods Expert Group (MEG), agree on the methodological approach to be taken. Finally, the results of the co-generated process will be communicated in targeted ways to the requester (e.g. as a report or brief or other output to be discussed with the requester), as well as relevant decision-makers, the knowledge community and the general public. See figure below for the process of answering requests below and here for the video: <https://www.youtube.com/watch?v=eGvz4cBJEWI>.

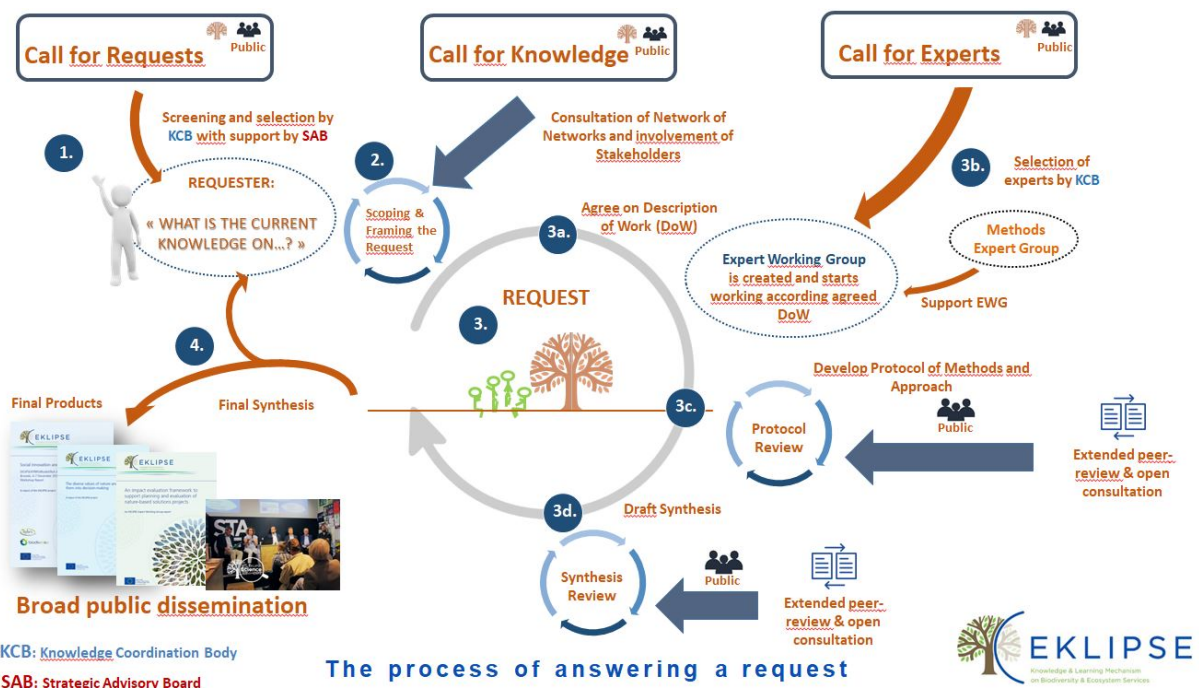


Figure 2: The EKLIPSE process of answering a request



## 6 Anticipated budget to process requests

Before applying to the call, we suggest that interested parties evaluate the budget they are planning on allocating for their request to be processed. Selection of a request will be followed by a discussion between the requester and EKLIPSE to advise on which method(s) would be the most suitable and to agree on a budget. Please note that due to EKLIPSE being a European Union funded project until July 2020, the selected requesters will not have to pay for the first 4 months of their request and therefore are not expected to pay for the scoping phase.

To give an indication of budget interested parties would need to plan for their request to be processed (following the scoping phase covered by EKLIPSE), below is a simple matrix, based on our past experiences of request costs.

Type of request	Type of method	Duration (months)	Number of experts	Budget (euros)	Examples of past requests
Assessment review	e.g. Rapid evidence assessment	5	7	Ca. 20 000	Refer to CfR.3/2018/2
Workshop organisation and Facilitation	e.g. Focus groups	6	20	Ca. 30 000	Refer to CfR.3/2018/3
Knowledge synthesis	e.g. Non-systematic literature review	8	15	Ca. 35 000	Refer to first EKLIPSE request on Nature-based solutions
Horizon Scanning	e.g. Joint Research Priority Finding	12	14	Ca. 45 000	Refer to CfR. 3/2018/1
Knowledge synthesis	e.g. Delphi Process	12	11	Ca. 55 000	Refer to CfR.2/2017/2
Knowledge synthesis	e.g. Systematic Review	15	11	Ca. 70 000	Refer to CfR.1/2016/2 (1 report)

If budget constraints are problematic, please highlight this in your form, mentioning the budget you could allocate to answering the request and the potential shortfall depending on the type of request you would like to put forward. EKLIPSE and ALTER-Net's vision is to improve decision making on biodiversity and ecosystem services in Europe and in line with our vision, we will aim to find solutions in order to answer topical and policy relevant knowledge needs.

## 7 Eligibility criteria

### 7.1 Eligibility criteria for requesters

- Requesters cannot be from organisations that are part of the EKLIPSE consortium



- Requesters cannot be individual members of the Knowledge Coordination Body, or Strategic Advisory Board
- Requesters should be able to represent the 'community' view of their policy or societal group e.g. policy makers, an NGO, international business group, local community group etc.
- Individual requesters should have a professional or community affiliation to the topic of the request

## 7.2 Eligibility criteria for requests

- Relevant to the European scale.
- Relevant to ongoing or future policy processes.
- Relevant to biodiversity and/or ecosystem services.
- Not requiring new knowledge, but based on the synthesis of existing knowledge.
- Consortia of requesters (representing for example different countries and/or different sectors (policy, NGOs/society, research) are encouraged.
- EKLIPSE encourage requester(s) to refine their question with the help of their organization or colleagues, to ensure the policy relevance of the question.

*EKLIPSE receives funding from the European Union's Horizon 2020 Programme under grant agreement 690474.*

